

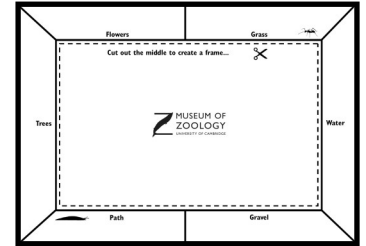
Picturing Nature

Do your own nature survey to discover which creatures live in the habitats near you. Then think about how change to these habitats can impact our local wildlife.

Print the nature frame, or create your own using an A4 sheet of paper and pencils.

Ask a grown-up to help you to cut out the middle.

Discover the wildlife where you are using the frame:



Grass, Gravel & Path

For these habitats you can place your frame down on the ground and draw what you see within.



Trees

For this habitat try placing a white sheet or tray beneath a tree or bush. Then shake the branches to see what falls out.

You can then place the frame on the sheet and draw what you see within.



For a video guide on this mini-beast survey method (beat netting) go here:

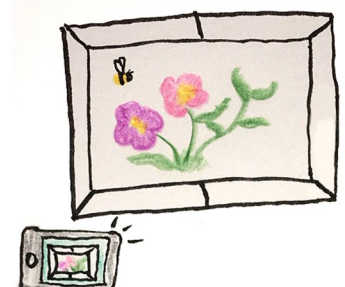
museumofzoologyblog.com/2020/06/11/how-to-observe-wildlife-beat-netting/

Flowers & Water

For these habitats try holding your frame up in front of some flowers or above some water and then take a picture through it. You can then look at the picture and draw what you see within the frame.

See here for a step by step guide on how to make your own mini pond:

museumofzoologyblog.com/2020/05/15/build-your-own-mini-pond/



Record what you see around the edge of the frame

Changing Habitats

Fenland habitat

Most of Cambridgeshire looked like this 200 years ago:



Farmland habitat

Most of Cambridgeshire looks like this now:



Think & Chat

Look at the two habitats in the photos above. What differences can you see?

Now hold up your frame so that the photos are in the centre. Thinking about the habitats you used to complete your nature frame, can you see similar habitats in the photos?



If we change a habitat too much, the animals living there will have to find somewhere else to live. Sometimes this means that they have nowhere to go. How can we reverse the change between these two photos?

Play

You can travel back in time and use the Museum of Zoology collection to discover what has changed since 200 years ago.

Play our Insect Time Machine Game here:

museum.zoo.cam.ac.uk/jenyns/insect-collecting-game



Use Your finished frame to surround a photo or picture of you exploring nature