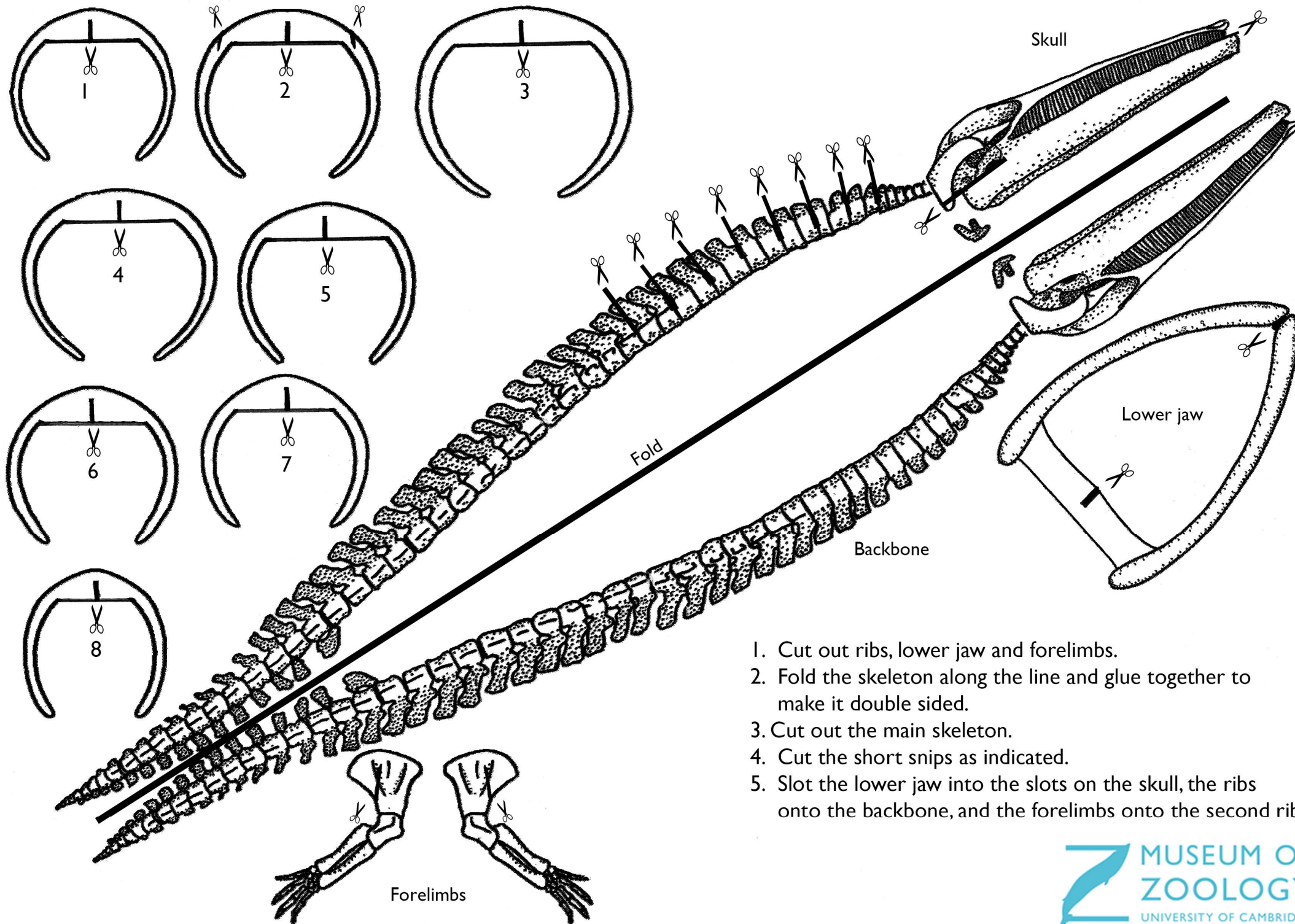


Ribs:



1. Cut out ribs, lower jaw and forelimbs.
2. Fold the skeleton along the line and glue together to make it double sided.
3. Cut out the main skeleton.
4. Cut the short snips as indicated.
5. Slot the lower jaw into the slots on the skull, the ribs onto the backbone, and the forelimbs onto the second ribs.